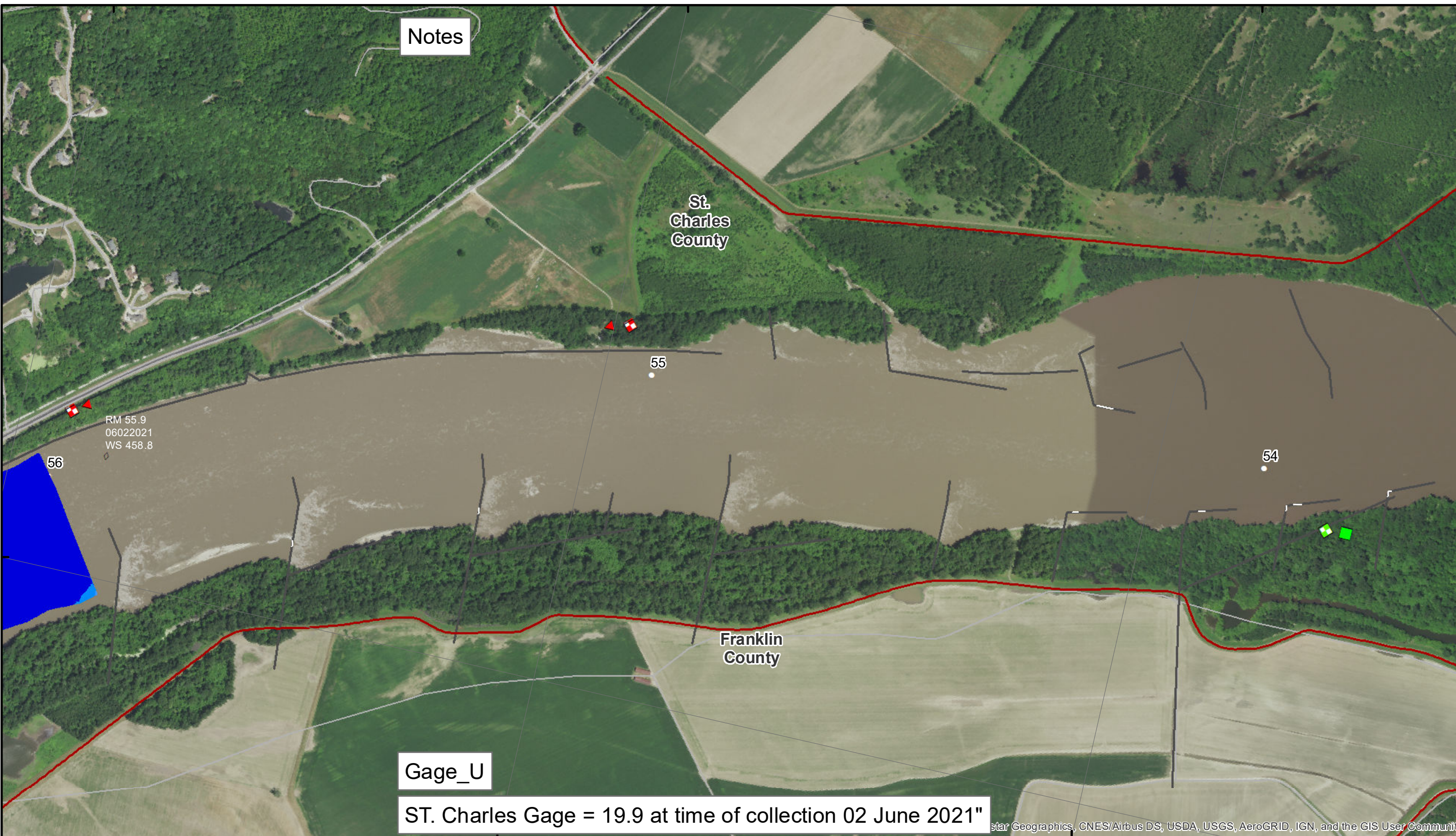


90°49'W

90°48'W

90°47'W



Notes

Gage\_U

ST. Charles Gage = 19.9 at time of collection 02 June 2021"

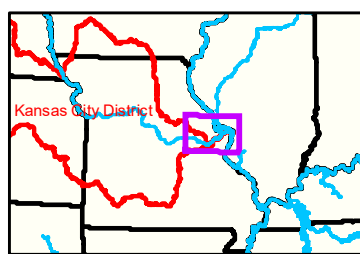
Star Geographics, CNES/Airbus DS, USDA, USGS, AeroGRID, IGN, and the GIS User Community



Disclaimer: The U.S. Army Corps of Engineers provides this information for informational purposes only. It is not intended for navigation or other critical applications. The Corps makes no warranty, express or implied, regarding the accuracy, completeness, or reliability of the information. The user assumes all liability for any use of this information. The information is provided as is, without any representation or warranty of any kind. The user agrees to hold the Corps harmless for any use of this information.

KANSAS CITY DISTRICT MISSOURI RIVER AREA OFFICE	
Submitted By:	MRAO
Reviewed By:	MRAO
Documented By:	MRAO
Approved By:	MRAO

**Survey Information**  
MO\_01\_LMR  
MO\_01\_LMR\_20210602\_CS\_56\_0\_57\_5\_SORT  
02 June 2021



90°48'W 90°47'W

<ul style="list-style-type: none"> <li><span style="color: red;">—</span> &lt; 8</li> <li><span style="color: yellow;">—</span> 8 - 9</li> <li><span style="color: green;">—</span> 9 - 9.5</li> <li><span style="color: cyan;">—</span> 9.5 - 10</li> <li><span style="color: lightblue;">—</span> 10 - 12</li> <li><span style="color: blue;">—</span> 12 - 14</li> <li><span style="color: darkblue;">—</span> 14 - 16</li> <li><span style="color: navy;">—</span> &gt; 16</li> </ul>	<ul style="list-style-type: none"> <li><span style="color: red;">—</span> &lt; 8 ft</li> <li><span style="color: yellow;">—</span> 8 - 9 ft</li> <li><span style="color: green;">—</span> 9 - 10 ft</li> <li><span style="color: cyan;">—</span> 10 - 12 ft</li> <li>— River Mile</li> <li>— Sailing Line</li> <li>— BSNP Structure</li> <li><span style="color: red;">—</span> Levee</li> </ul>	<p><b>LEGEND</b></p> <ul style="list-style-type: none"> <li><span style="color: green;">■</span> Green Passing</li> <li><span style="color: red;">▲</span> Red Passing</li> <li><span style="color: green;">◆</span> Green Crossing</li> <li><span style="color: red;">◆</span> Red Crossing</li> <li><span style="color: green;">●</span> Green Buoy</li> <li><span style="color: red;">●</span> Red Buoy</li> <li><span style="color: green;">⬇</span> Green CAN</li> <li><span style="color: red;">⬇</span> Red NUN</li> <li><span style="color: green;">⬇</span> Green</li> <li><span style="color: red;">⬇</span> Red</li> <li><span style="color: black;">⬇</span> Junction</li> </ul>	<p><b>Buoy</b></p> <ul style="list-style-type: none"> <li><span style="color: green;">●</span> Green CAN</li> <li><span style="color: red;">●</span> Red NUN</li> </ul>
---	--	--	---

0 312.5 625 937.5 1,250 2,500 Feet

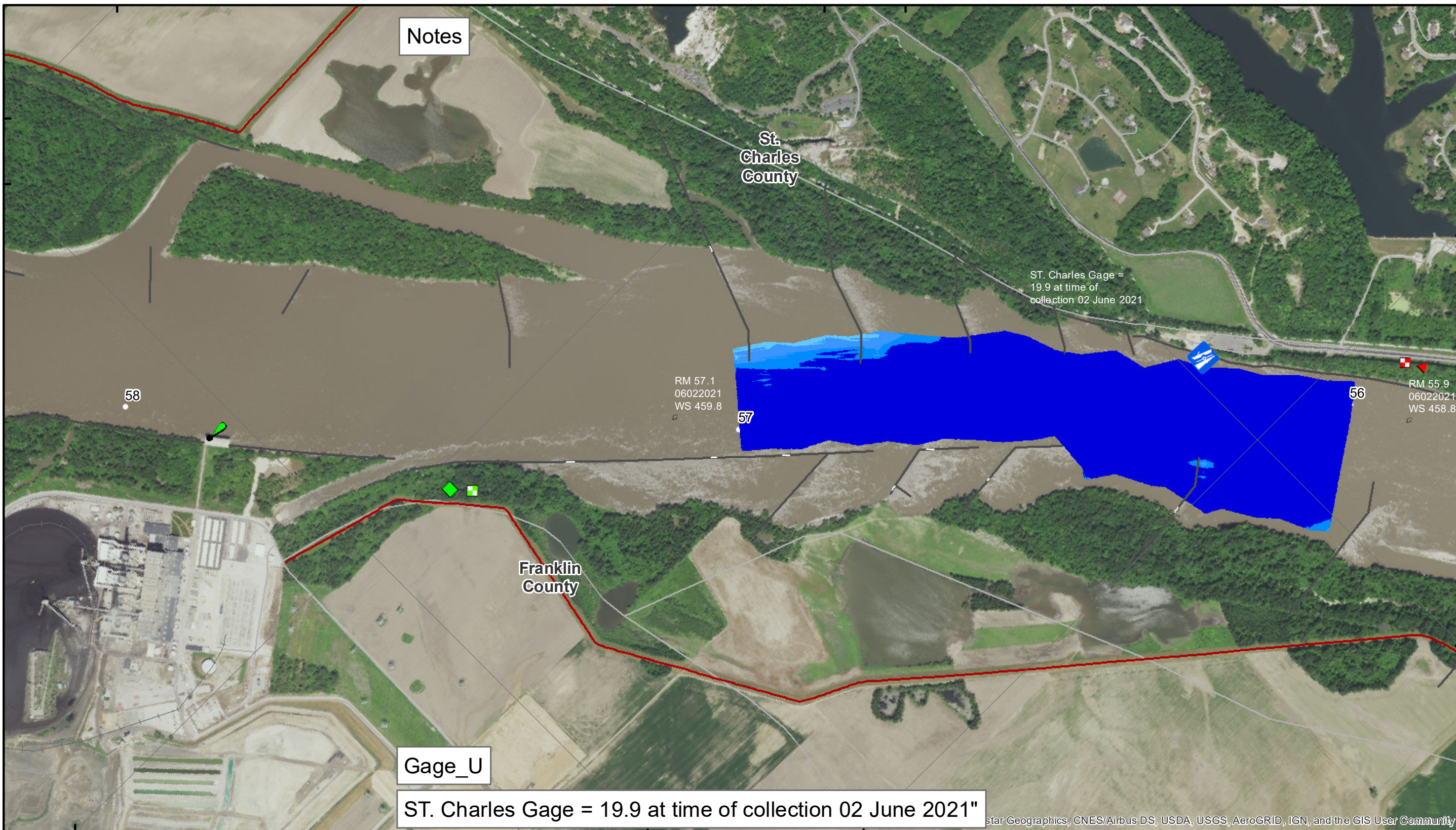
**NOTES:**  
Horizontal Coordinate System:  
World Geodetic System of 1984 (WGS84), projected to the Universal Transverse Mercator (UTM) Zone 15 North.  
Distance units in U.S. Survey Feet

Vertical Datum:  
Soundings are shown in feet and indicated depths are referenced to water surface at time of collection.

The information depicted on this map represents the results of a survey conducted on the date indicated and can only be considered to represent the general condition existing at that time.

The location of navigation aids are based on and provided by the U.S. Coast Guard.

**Sheet Number**  
25 of 46



Notes

St. Charles County

Franklin County

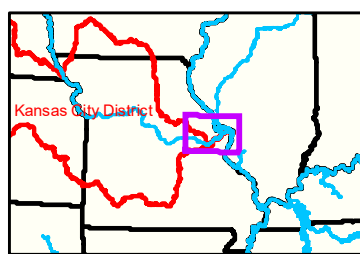
Gage\_U

ST. Charles Gage = 19.9 at time of collection 02 June 2021"

ST. Charles Gage = 19.9 at time of collection 02 June 2021

RM 57.1  
06022021  
WS 459.8

RM 55.9  
06022021  
WS 458.8



**LEGEND**

	< 8		< 8 ft		Green Passing		Green		Green CAN
	8 - 9		8 - 9 ft		Red Passing		Red		Red NUN
	9 - 9.5		9 - 10 ft		Green Crossing		Junction		
	9.5 - 10		10 - 12 ft		Red Crossing				
	10 - 12		River Mile						
	12 - 14		Sailing Line						
	14 - 16		BSNP Structure						
	> 16		Levee						

**Scale**  
0 312.5 625 937.5 1,250 2,500 Feet

**Notes:**  
Horizontal Coordinate System: World Geodetic System of 1984 (WGS84), projected to the Universal Transverse Mercator (UTM) Zone 15 North. Distance units in U.S. Survey Feet.  
Vertical Datum: Soundings are shown in feet and indicated depths are referenced to water surface at time of collection.  
The information depicted on this map represents the results of a survey conducted on the date indicated and can only be considered to represent the general condition existing at that time.  
The location of navigation aids are based on and provided by the U.S. Coast Guard.



**DISCLAIMER:** The U.S. Army Corps of Engineers (USACE) provides this information as a service to the public. It is not intended to be used for any purpose other than that for which it was provided. The USACE does not warrant the accuracy, completeness, or reliability of the information. The USACE is not responsible for any errors or omissions in this information. The USACE is not responsible for any damages, including consequential damages, arising from the use of this information. The USACE is not responsible for any actions taken based on this information. The USACE is not responsible for any actions taken based on this information.

KANSAS CITY DISTRICT MISSOURI RIVER AREA OFFICE	
Submitted By:	MRAO
Reviewed By:	MRAO
Approved By:	MRAO

**Survey Information**  
MO\_01\_LMR  
MO\_01\_LMR\_20210602\_CS\_56\_0\_57\_5\_SORT  
02 June 2021

**Sheet Number**  
26 of 46